



Annual Report '20-'21

Harvard University's Cooperation
Agreements with the City of Boston

7.1.2020 — 6.30.2021



Annual Report '20-'21

Harvard University's Cooperation Agreements with the City of Boston

7.1.2020 — 6.30.2021



Harvard remains deeply committed to its longtime partnerships with the Allston-Brighton neighborhood and the City of Boston.

Many of the ways in which the University, community, and City collaborate are included as commitments in Harvard's five active cooperation agreements with the City of Boston:

| | | |
|--|--|---|
| Science Complex Cooperation Agreement (4/2/08) | IMP Cooperation Agreement (7/10/14) | Harvard ArtLab Cooperation Agreement (4/24/18) |
| 28 Travis Street Cooperation Agreement (1/2/14) | Harvard Life Lab Cooperation Agreement (4/8/16) | |

In addition to providing a comprehensive update on Harvard's commitments to the Allston-Brighton community, this annual report highlights many of the exciting partnerships and programs taking place throughout our shared neighborhood, each and every day.



"Harvard is proud to be part of a unique neighborhood. Our community depends on the strength of our longstanding partnerships and on the ongoing generation of creative and innovative programs. We remain committed to celebrating the many connections between the University and our neighbors in Allston-Brighton—and look forward with optimism to the future."

Lawrence S. Bacow
President of Harvard University

"作为我们这个独特社区的一部分，哈佛感到非常自豪。我们的社区依赖于我们长期伙伴关系的力量以及不断产生的创意和创新计划。我们仍致力于庆祝大学与Allston-Brighton居民之间的许多联系，并对未来充满无限的希望。"

哈佛大学校长
Lawrence S. Bacow

"Harvard se enorgullece de ser parte de un vecindario único. Nuestra comunidad depende de la fuerza de nuestras asociaciones de larga data y de la generación continua de programas creativos e innovadores. Seguimos comprometidos a celebrar las numerosas conexiones entre la Universidad y nuestros vecinos en Allston-Brighton, y miramos hacia el futuro con optimismo".

Lawrence S. Bacow
Presidente de Harvard University

"Harvard se orgulha de fazer parte de um bairro exclusivo. Nossa comunidade depende da solidez de nossas parcerias de longa data e da geração contínua de programas criativos e inovadores. Continuamos empenhados em prestigiar as inúmeras conexões entre a Universidade e nossos vizinhos de Allston-Brighton — e aguardamos o futuro com otimismo".

Lawrence S. Bacow
Presidente da Universidade
de Harvard

What's Inside

This year, we take a look at Harvard's community programs and partnerships in Allston-Brighton through the eyes of the dedicated Harvard Ed Portal team.

| | |
|--|-----------|
| Remembering Rob Lue | 2 |
| Harvard Ed Portal | 3 |
| Arts & Culture | |
| Workforce Development | |
| Economic Development | |
| Health & Wellness | |
| Digital Learning & HarvardX For Allston | |
| Youth Programming | |
| Public School Partnerships | |
| Housing | 11 |
| Public Realm | 12 |
| Harvard Allston Partnership Fund | 13 |
| Partners | 14 |
| Public Information & Outreach | 15 |
| What's New in the Neighborhood | 16 |
| Appendices | 17 |
| Appendix A: Cooperation Agreement Budget Overview | 17 |
| Appendix B: Status Of Cooperation Agreements | 18 |
| Appendix C: Housing Stabilization Fund Update | 22 |
| Appendix D: Community Programming Catalog July 2020 - June 2021 | 23 |

REMEMBERING

Rob Lue

A visionary leader who built a vibrant Ed Portal



When you come through the Harvard Ed Portal, the first thing you are likely to notice is the welcoming atmosphere and the diversity of programming and people. This was Rob Lue’s vision from the start – a transformative place where communities come together, share ideas, and learn from one another.

Rob Lue, Faculty Director of the Ed Portal, passed away last year from cancer at age 56. He believed deeply in educating the whole person, in lifelong learning, and in making education accessible to everyone. In his words:

“Learning isn’t limited by age, occupation, income, or even space and time. In our 21st-century information age where knowledge is dynamic, ever-growing and changing, the Harvard Ed Portal provides new opportunities to keep up to date by plugging into learning and discovery. We hope these opportunities can inspire anyone and everyone in our community, at any point in their lives, to take a new direction and open a new door.”

Lue was key in developing and defining the Ed Portal’s mission, programs, and extensive outreach to the Allston-Brighton community. The first program developed at the Ed Portal was the mentoring program. Harvard undergraduate mentors were charged with instilling in local youth “a passion for lifelong learning” through one-on-one instruction in a variety of subjects like creative writing, math, science, public speaking, and the arts. In turn mentors would enhance their learning by teaching others. This cross-learning, multi-disciplinary approach was very much the focus of Rob Lue’s work and continues today across all programs at the Ed Portal.

In addition to being the Faculty Director of the Harvard Ed Portal, he served as Founding Faculty Director of HarvardX, Professor of the Practice of Molecular and Cellular Biology, Richard L. Menschel Faculty Director of the Derek Bok Center for Teaching and Learning, UNESCO Chair on Life Sciences and Social Innovation, and Faculty Director and Principal Investigator of LabXchange. “To lose a giant makes us feel

grateful for their time with us,” said Tim McHale, Chair of the Harvard Allston Task Force. “He injected so many ideas and challenges into our social system and their effects will be known for generations. I can speak to the genesis of the Ed Portal and I am very thankful that he took his transformational concept and turned it into reality. Hearing him speak, I was always caught up in his enthusiasm and passion and wish we had a thousand more like him.”

Born in 1964, Lue was raised in Jamaica and graduated from St. George’s College in Kingston in 1982. He earned a B.A. from the College of the Holy Cross in 1986. He then took a year off to paint at Brandeis University. Art would remain a source of constant joy even as his professional career veered toward the sciences. He earned his Ph.D. in biology at Harvard in 1995 and joined the molecular and cellular biology faculty four years later.

“Learning is a journey across your entire life. The Harvard Ed Portal is a place where, no matter where you are in that journey, you can continue to grow and learn.”

– ROB LUE



Rob Lue introduces a public lecture at the Harvard Ed Portal.



Rob Lue and Harvard University President Lawrence S. Bacow, center, watch Raphael Oliveira, a 5th grader, present his project at the Ed Portal Mentoring Showcase.



Rob Lue with the Harvard Ed Portal Mentors at the 2018 Mentoring Showcase.



- Images (clockwise):
- As part of the exhibit "Monuments Reimagined" the Harvard Ed Portal asked community members to consider "what art would make your community more welcoming?" Answers included using the natural landscape and paying tribute to modern activists.
 - Harvard Ed Portal's undergraduate mentors serve Allston-Brighton youth and families. They encourage youth to explore a variety of subjects and work with high schoolers on college and career preparation.
 - "Puzzle Me, Allston-Brighton," a mural by local artist Kit Collins, is packed with well-known sites, symbols, and landmarks that celebrate the Allston-Brighton community and its history.

For everyone in the community



Program Areas

- Arts & Culture
- Workforce Development
- Economic Development
- Health & Wellness
- Faculty Speaker Series
- Digital Learning & HarvardX for Allston
- Youth Programming
- Public School Partnerships

By the Numbers
July 2020 - June 2021

| | |
|---|---|
| 152 new Ed Portal members | 219 English language learners reached |
| 33k+ virtual engagements across Ed Portal programming | 52 adult and youth scholarships to the Harvard Ceramics Program, Harvard Extension School, and the A.R.T. |
| 373 events hosted by the Ed Portal | |



Building Community, Staying Connected
By Ben Franco
Assistant Director, Harvard Ed Portal

Throughout the past year, our priority remained to engage and expand our vibrant community – internally as a team, with colleagues across Harvard’s campus, and with our Allston-Brighton neighbors.

Taking a holistic approach to learning, we intentionally revised programming to facilitate conversations, foster trust, and build an open environment that allows space for innovation and creativity across all Ed Portal activities. In partnership with experts from across Harvard’s campus, the Ed Portal built dynamic and engaging online programs that brought subjects to life. The benefits are reflected across all our interactions with students, teachers, families, and neighbors who continue to seek out the Ed Portal, reinvigorating our sense of community.



The Heart of the Ed Portal
By Maile Takahashi
Director of Community Programming

I’m inspired by the perseverance and resilience of our neighbors in Allston-Brighton and the people who are at the heart of Harvard’s community partnerships and Ed Portal programming. For all the challenges that we’ve confronted – closing physical spaces, shifting to working and learning from home, managing personal health and wellbeing – we did spend more time together.

From the start of the COVID-19 pandemic, the Ed Portal team recognized an important moment to redesign programming in a way that was responsive to evolving community needs, focusing on equity and inclusion, building relationships through virtual learning, and promoting mental health and wellness. Across all program areas, the team created new opportunities to engage kids, high school students, teachers, families, local artists, and small businesses. Every offering was a deliberate attempt to provide timely resources and foster a sense of community and togetherness.

This report reflects on many of the programs and offerings from the perspective of the people who have made an incredible contribution to keeping the Ed Portal open to the community, and who continue to keep our neighbors at the forefront of planning and delivering programs.

Arts & Culture

Supporting a vibrant Allston-Brighton through visual and performing arts, engaging creative arts opportunities for youth and adults alike, innovative public art, and capacity building for the creative community



The fourth annual Allston-Brighton Winter Market was held virtually from November 2020 until February 2021.

By the Numbers

8
art exhibitions and related virtual programs

56
youth participants across 8 arts programs

92
participants across 6 programs designed to support local artists

19
Allston-Brighton local makers and artists participated in the Winter Market

32k
virtual engagements across arts programming

Gallery Exhibitions*:



Everyday Encounters



PARTLY CLOUDY



Fresh Breaths: Portrait of Sabrina



Monuments Reimagined



SPIT IT OUT

*Online and outdoors.



Resilience Through Art

By Eve C. Alpern
Assistant Director for Arts Programming

At a time when people were deeply struggling, arts programming at the Harvard Ed Portal was a critical part of staying connected with our communities.

Thinking about what the Ed Portal uniquely has to offer and listening to the needs of our community, we shifted the arts online and outdoors, delivering virtual exhibitions and performances, interactive public art installations, and hands-on [youth workshops](#) to harness art for wellness and social justice. Our creative approach to building dynamic online and asynchronous learning spaces brought together students, families, and neighbors at a time when people most needed social interactions. We intentionally designed programming that allowed people of all ages to participate however worked best for their desires and circumstances.

For example, this year we produced an online version of the [Allston Brighton Winter Market](#), our annual celebration of local creative entrepreneurship. It featured double the number of local makers from prior years and interactive materials. A host of events were launched around the Market, designed to support local artists through professional development opportunities, small group marketing consultations, and networking sessions. A record number of visitors attended, proving that even under the most difficult of times, the arts have the power to inspire and create a sense of belonging and community.



Supporting Local Artists, Building Joy and Community

By Philana Brown
Arts Program Coordinator

During the pandemic, the Ed Portal's arts program was re-energized to support creativity and community in new ways.

To sustain artists' work and safely engage the public, we transformed the Ed Portal's facade and courtyard into an outdoor gallery. The Crossings Gallery, an exhibition space that features the work of local artists, was re-envisioned to allow visitors to see artwork as they walked outside. Visitors were also invited to virtual programs and learn more about the artwork online.

We also commissioned an interactive mural titled "[Puzzle Me, Allston-Brighton!](#)" by local artist Kit Collins. The mural was packed with illustrations of well-known sites, symbols, and landmarks that celebrate Allston-Brighton and its history. The playful nature of the mural sent visitors down a path of exploration, allowing them to take a meaningful break from daily routine.

The self-guided Western Avenue Arts Walk, chronicling public art in the neighborhood, provided another fun way for neighbors to experience art in the fresh air. The Walk includes both permanent and temporary works of art outside the Harvard Business School and Harvard Ed Portal, as well as works affiliated with Zone 3 and the City of Boston.

Through public art and more, I'm hopeful we created opportunities for joy, creative expression, and connection with our community.

Workforce Development

Providing innovative programming, skills-based workshops, and Community Scholarships to Allston-Brighton residents; setting individuals up for success at any stage in their career

By the Numbers

23

career planning workshops

20

community scholarships to Harvard Extension School offered to Allston-Brighton residents

41

networking events for job seekers

1,650

participants across workforce development programs



Connecting Allston-Brighton Residents Through Career Advancement Opportunities

By Michele Rocray
Associate Director of Workforce and Economic Development

Amid the COVID-19 pandemic, workforce trainings and opportunities for professional growth became crucially important to supporting our Allston-Brighton community. As everyone struggled with physical, emotional, and financial hardships, the questions on my mind were: how do we help our neighbors develop the needed skills to conduct business virtually, network, and find jobs during major layoffs and business closings? What resources do we deploy in response to the major shift to remote work?

Researching these questions and understanding the need to deliver practical and relevant resources, we immersed ourselves in planning targeted solutions for

succeeding in the virtual world by developing just-in-time skills for communicating online, and networking opportunities that offered not only practical tools but also meaningful ways to connect people. Our marquee Monday Job Seekers Connection, which focused on online presence and networking, became more visible and created opportunities in a slow and competitive job market. The program continued uninterrupted, helping to calm anxiety and move people to action.

It is through the delivery of these types of programs that I am reminded of the value of a supportive network. Leveraging Harvard's resources, technology, and expertise, and partnering with the community helped us respond to the immediate needs on the ground. Ultimately, we found renewed inspiration for helping one another.



Community Scholarships for Allston-Brighton Residents

Community Scholarships to Harvard Extension School were used by Allston-Brighton residents to register in a variety of courses, including:

Fall 2020

- Beginning Screenwriting
- Child Health in America and Around the World
- Health Justice
- Intensive Elementary Modern Standard Arabic I
- Introduction to Sustainability and Environmental Management
- Molecular and Cellular Biology
- Pandemic Ethics
- Project Management
- The Art of the Book Review
- Understanding Special Needs

Spring 2021

- Advanced Digital Photography
- American Dreams Made in Hollywood
- Criminology and Justice
- Introduction to Statistical Modeling
- Negotiation and Organizational Conflict Resolution
- Real Estate Finance and Investment
- Renewable Energy Projects
- Teaching Mathematics with a Historical Perspective
- Video Editing and Digital Design
- Work and Well-Being

Economic Development

Connecting the local business and nonprofit community with programs designed to promote success in a 21st-century economy

By the Numbers

\$350k+
in estimated vendor sales generated through the online Winter Market

1,523
subscribers to the Harvard Ed Portal's Economic Development Newsletter as of June 30, 2021

Sign Up

for the Economic Development Newsletter

hrvd.me/econdev-newsletter



Responding to Changing Needs—Resources for the Small Business Community

By Danielle Easton
Workforce and Economic Development Coordinator

As small businesses in Allston-Brighton and beyond confronted the COVID-19 pandemic and traditional business models were challenged, the Harvard Ed Portal worked on new and creative ways to deliver resources and support their recovery.

Through our small business newsletter, we provided information on financial workshops and funding opportunities, reopening guidelines and hiring resources, as well as takeout and delivery initiatives at local restaurants. In response to the evolving environment of the small business community, we conducted a survey to understand needs, and subsequently revised the economic development offerings to try to meet those needs. We increased our

economic development newsletter to biweekly and created a new webpage, ensuring that resources and timely updates were deployed effectively.

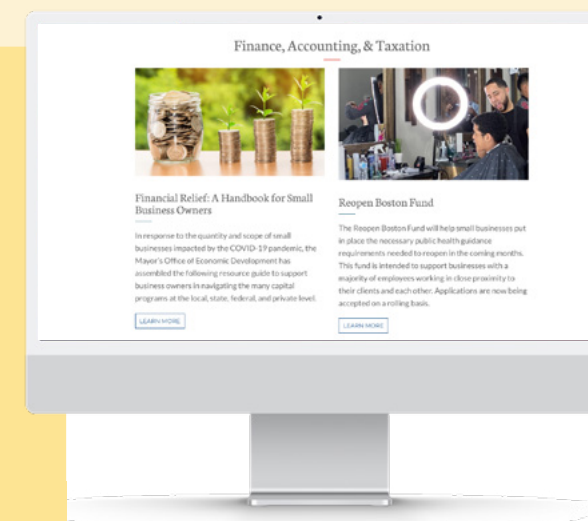
To further provide valuable information on important topics like business development, essentials of finance, and leading people, last year, we launched the Harvard Manage Mentor program, a four-week class model that combined materials from Harvard Business Publishing with live Zoom classes led by small business expert and Harvard Extension School Instructor, Areen Shahbari. Targeted to small businesses, Harvard Manage Mentor served as a space for business owners to ask questions, network with classmates, and learn from peers. Seeing how much participants value and appreciate the program has been one of the most rewarding parts of working on the economic development team.

Economic Development Resources

To support Allston-Brighton small businesses, particularly during the COVID-19 pandemic, the Harvard Ed Portal launched a new webpage that provides reliable resources, useful tools, and informative articles on timely topics.

Visit the Economic Development Resources website at:

edportal.harvard.edu/econdev-resources



Health & Wellness

Providing Allston-Brighton residents with a variety of programs and recreational opportunities designed to promote a healthy body and mind



By the Numbers

32
virtual yoga classes

24
virtual mindfulness workshops

79
Allston-Brighton participants in yoga and mindfulness classes

17
financial wellbeing workshops for youth and adults

21
participants in ceramics workshops



Wellness Programming for a Healthy Mind and Body

By Jason Clark
Manager, Harvard Ed Portal and Health & Wellness

Health & Wellness programming took on a new meaning this past year. The stress, isolation, and fear that many were experiencing challenged our Ed Portal team to think creatively about wellness programming in a way that would connect people and promote resiliency. With folks spending more time inside and moving less, our approach to offerings focused on the need for stress management and physical movement.

In partnership with My Ngoc To, Taryn Burns, and Isabel “Izzie” Ryan – skilled instructors in mindfulness and yoga – the Ed Portal provided a series of virtual workshops for Allston-Brighton neighbors. Ngoc To led Memory, Social Justice, and Mindfulness and Koru Mindfulness, teaching participants new skills for building resiliency through meditation. Memory, Social Justice, and Mindfulness additionally addressed the need for racial justice via mindfulness. Burns and

Ryan led a yoga and strengthening program. The fact that everyone, including the instructors, participated from home, created a sense of community and the feeling of camaraderie and togetherness.

Through another partnership with the Harvard Ceramics Studio, the Ed Portal held two clay programs: Hand to Heart: Mindfulness Through Clay and Pottery Chill Out. Taking an interactive approach, we mailed clay and tools to participants and, while apart, recreated the feeling of taking a class with peers. In doing so, we provided the space for community members to relax and create something tangible.

In addition, we continued memberships to Harvard Recreation virtually and added Zumba classes, taught by Abraham Peña, both in English and Spanish.

As we look to the future, I’m excited for programming that incorporates elements of building resiliency and community, and for helping our neighbors in Allston-Brighton embrace health and wellbeing.



Hand to Heart: Mindfulness Through Clay

This past January, the Ed Portal held “Hand to Heart: Mindfulness Through Clay,” a four-session virtual workshop that offered participants a fun and interactive opportunity to use clay as an expressive outlet for creativity and relaxation. The Ed Portal provided all needed materials through contact-free pickup and home delivery.



Creations from workshop participants.

Digital Learning & HarvardX for Allston

Fostering lifelong learning in a digital age through innovative, facilitated programs for community members

By the Numbers

34
high school students participated in the virtual Harvard Ed Portal Summer Internship Program

18
high school students participated in the virtual Ed Portal's High School Computer Skills Program

3
virtual digital safety workshops offered to the community

37
participants connected to LinkedIn Learning resources



Connecting High School Students

By Leah Dodell
Program Manager

Last year, we kicked off Digital Learning and HarvardX for Allston with Harvard's first virtual summer internship program for high school students.

Traditionally, the Summer Youth Employment Program brought students to campus for jobs across the University. To continue the internships throughout the pandemic, the Ed Portal created a fully remote program, using a cohort model that connected high school students in small groups, working with a Harvard undergraduate or recent graduate as their manager. We were pleased to see students build a sense of community during an otherwise isolating time.

The Ed Portal also continued offering the High School Computer Skills program virtually to ensure that high school students had the digital skills necessary to prepare for jobs the following summer.

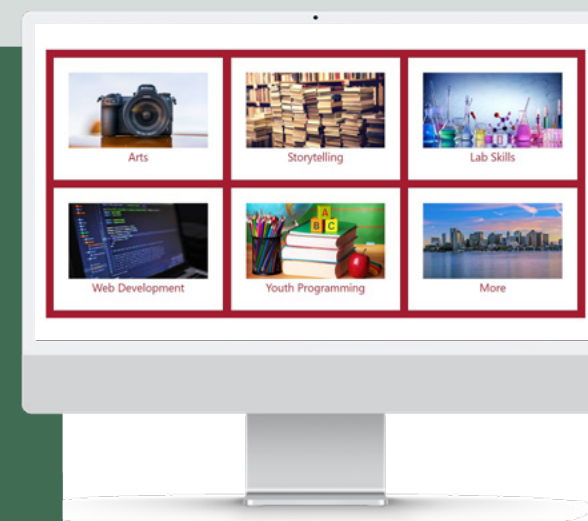
Another focus area for virtual programming was advancing digital skills. Knowing that digital safety would be an important topic for our community as children went to school and adults worked online, we partnered with Harvard University Information Technology (HUIT) to develop a series of three digital safety workshops. One of the workshops featured a panel discussion that brought together experts like Harvard Graduate School of Education Professor Joe Blatt, who shared strategies around digital safety for students.

As some elements of virtual school and work are here to stay, the Ed Portal will continue expanding digital access and knowledge across Allston-Brighton.

Harvard Ed Portal Summer Intern Program

The Harvard Ed Portal Summer Internship Program was started in 2020 for high schoolers in the Boston area. The program provides a valuable introduction to the work environment along with experience in specific areas that the interns are interested in. The interns choose their cohort project according to their interests, ranging from arts, web development, lab skills, storytelling, to youth programming. Each cohort creates a unique final project. To see the final projects, visit:

hrvd.me/edportal-interns-2020



Youth Programming

Advancing Harvard's commitment to education through programming designed to support classroom learning and develop enthusiastic learners

By the Numbers

106

Allston-Brighton students participated across youth programs, including mentoring and free academic support

31

Harvard College mentors

60

student participants in Summer Explorations programming

21

A.R.T. scholarships provided to Allston-Brighton students

37

student participants in 1st & 2nd Grade Club, Movement & Wellness, Connections Club: 3-5 Grade, Connections Club: 6-8 Grade, and Art Making with Imagination, Joy & Community



A Focus on Student Success

By Ethan Davies
Mentoring Coordinator

This past year brought new challenges and engagement opportunities for the Youth Programming team. We started with planning a fully virtual [Summer Explorations](#), an Ed Portal program offering a wealth of learning activities for students in grades 1-8. We began pushing our traditional views of what was possible, thinking about students' needs and the best ways to design programming that was meaningful and interactive.

From the outset, student success remained our focus in planning and executing every program. With social distancing and the remote work model, we quickly realized the need for a new approach to assessing what the students needed and what success looked like. To this end, family outreach and information gathering became a focus, informing our planning and decision making. We sought input on everything from Zoom function to social needs to academic regression so that our program offerings reflected a thoughtful and collaborative solution to real issues. The feedback that we received indicated that the needs for academic support, social interaction, and fun collaboration demanded serious thought.

Our program team, along with all of our graduate and undergraduate support, took on this challenge head-on. We launched an academic support program and ensured that there were opportunities for one-on-one interaction as well as smaller group activities. We also continued to send supplies to every student to ensure that they were getting a hands-on learning experience with a focus on fun.



Harvard's Undergraduate Mentors – Creating Togetherness

By Susan Johnson
Assistant Director for Socially Engaged Learning

The COVID-19 pandemic has changed teaching and learning forever and, for the Harvard undergraduate mentors, the past year has been full of learning experiences.

The Ed Portal's [Mentoring Program](#) has been the space where the mentors have responded live to the educational challenges brought on by the pandemic, transformed ideas into reality, designed hands-on interactive lessons, and engaged students in new and innovative ways – all in a virtual setting. Through the program, Harvard undergraduates mentor K-12 students one-on-one in creative and expository writing, public speaking, math, science, technology, and the arts; they also lead curriculum-based clubs and deliver curriculum to school groups.

More than the teaching experience, this past year, the mentors sought out a sense of community and togetherness. For them, the Ed Portal has been an anchor and home away from home where they created a cohesive nuclear group focused on serving the community. Even with their own classes being fully online, the mentors created room to deliver instruction to students – kids who look up to them as role models. They made learning fun, supported creativity, and encouraged youth to develop strong identities as enthusiastic learners. It's been wonderful to see how much the mentors value being connected to the Ed Portal, serving youth, and building community.

Public School Partnerships

Bringing Harvard programming and resources to educators, parents, and students within Boston Public Schools in Allston-Brighton

By the Numbers

93

Allston-Brighton seventh graders participated in virtual Project Teach

64

students participated in the RISE series

40

RISE workshops offered to high school students focused on college preparation, career pathways, tutoring, and personal development

39

Allston-Brighton residents attended virtual family engagement events



Empowering High School Students

By Jean Dao
Public School Partnerships Program Manager

In a critical year for students, the Public School Partnerships (PSP) team focused on delivering interesting and impactful educational programming. We expanded the [Reimagining Identity, Self, and Excellence \(RISE\)](#) program, which began in 2019 as a conference, to encompass the full breadth of high school programming offered by the Harvard Ed Portal. The goal of RISE is to provide students with the tools, resources, and support they need to make their own informed decisions about life after high school. Programming took the form of virtual workshops, events, academic tutoring, and paid internships. Through an internal collaboration, offerings included topics ranging from financial literacy to ceramics to career panels and college application support. The program also included one-on-one academic support for high school students provided by a team of volunteer graduate and undergraduate students. While challenging in many ways, the program turned out to be effective in reaching high school students, particularly those who wouldn't usually be able to get to and from the Ed Portal.



Supporting Local Families and Educators

By Joan Matsalia
Public School Partnerships Associate Director (Ret.)

Over the past year, the biggest questions facing educators and the out-of-school-time learning community have been focused on student and family engagement: how to design programs and activities in meaningful ways that are responsive to the current challenging times. From the beginning, the PSP team surveyed local educators and out-of-school-time learning professionals to learn more about these needs and how to best deploy Harvard resources to help meet them. In response to the findings, PSP held a two-part professional development workshop focused on family engagement. We partnered with a Harvard Graduate School of Education alum and expert in the field who focused on helping educators think creatively about what it means to engage families online. Similarly, we held another professional development workshop focusing on summer engagement programming and how to provide social and emotional support to students and families. The workshops offered a range of sample activities designed to reinforce learning while providing opportunities for youth to express themselves.



Virtual Project Teach – Creating College & Career Mindsets

By Libna Ramos
Public School Partnerships Program Coordinator

Harvard's [Project Teach](#) ensures that students have the tools and support they need to believe that higher education can be part of their future. The program normally involves a day on Harvard's campus, where students get a tour and a chance to take part in a specially designed class of their choosing. With the shift to online school over the past year, Project Teach was in transition to a virtual setting. In January, we piloted a version with the Gardner Pilot Academy, a visit that was fun and interactive for the students. The students were broken into small breakout rooms on Zoom and had a member of the Crimson Key Society leading the virtual visit. Additionally, we incorporated a Harvard tour as well as the college and career talk, prompting students to select answers as they moved forward with the visit. They also got to see pre-recorded trailers of classes that they could take at Harvard. Seeing the success of these interactions, we used this model for other school visits in Allston-Brighton. I'm impressed by the students' resilience – they were even teaching staff and adults about how to use Zoom.

Sign Up

for the Public School Partnerships Newsletter

hrvd.me/psp-newsletter



Housing

Partnering with community organizations to support programs and initiatives that create and preserve affordable and diverse housing options in Allston-Brighton

All Bright Homeownership Program

By the Numbers*

\$3M
in Harvard Funding

17
properties purchased since the start of the program

\$12.1M
in funding leveraged by ABCDC since the start of the program

22
units sold since the start of the program

*Number of properties purchased as compared to the number of units sold reflects certain properties being multifamily homes. See Appendix C for a complete Housing Stabilization Fund Update, prepared by Allston Brighton Community Development Corporation (ABCDC).

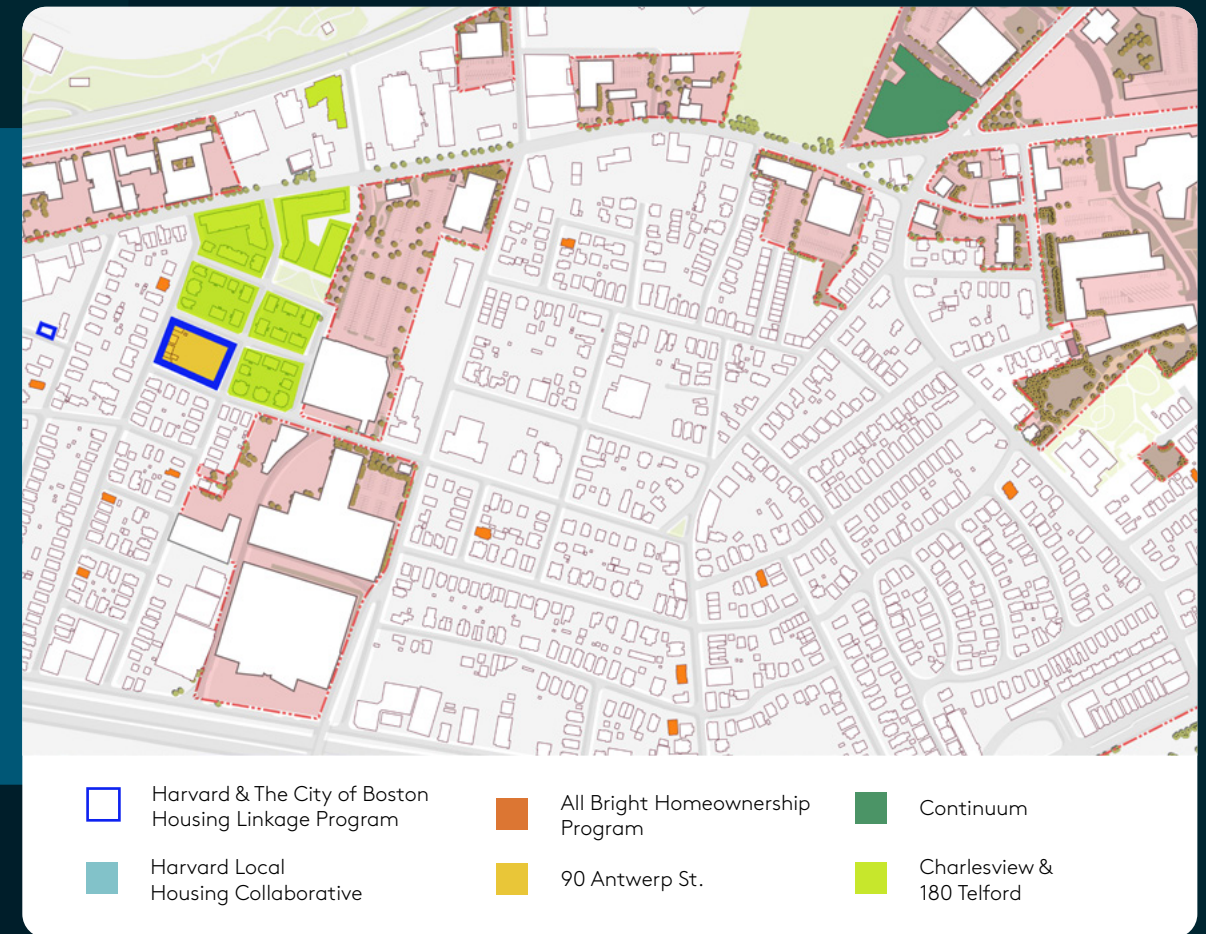


“Creating more affordable housing is essential to preserving the diversity that makes Boston a thriving city. Initiatives like the All Bright Homeownership Program and the Harvard Local Housing Collaborative are successful examples of Harvard’s continued partnerships to create and preserve affordable housing not only for Allston-Brighton residents but for households across the City of Boston.”

–**Sheila A. Dillon**
Chief of Housing and Director of Neighborhood Development

Harvard University’s Housing Initiatives in Allston-Brighton

Harvard University remains committed to working closely with community partners to support programs and initiatives that create and preserve affordable housing and homeownership opportunities in Allston-Brighton. In addition to contributing to the City of Boston’s Housing Linkage Program, some of the initiatives that support affordable housing in Allston-Brighton include the [Harvard Local Housing Collaborative](#), the All Bright Homeownership Program, 90 Antwerp Street, and Charlesview Residences.



Update on 90 Antwerp Street

Construction at 90 Antwerp Street – formerly the site of Brookline Machine – began in winter 2019 by Urbanica, the selected affordable housing developer. The development consists of 20 deed-restricted homeownership units with 20 covered parking spaces for homeowners, bicycle storage, and publicly accessible open space. Twelve of the 20 units will be affordable. The project was enabled by Harvard University as a cooperation agreement benefit and is nearing completion.

Photo: 90 Antwerp St., July 2021

Public Realm

Supporting public space improvements that allow Allston-Brighton to shine; empowering the efforts of community partners to enhance the physical and cultural landscapes of the neighborhood; contributing to open spaces that promote local civic and cultural activities

Harvard-Allston Public Realm Flexible Fund

Through the Flexible Fund, Harvard University supports projects that create vibrant public spaces and encourage civic and cultural activity.

2020 Grant Recipients

- Allston Village Main Streets to increase the vibrancy of public landscaping in Allston
- Artisan's Asylum to support community outreach and engagement efforts
- Friends of Collins Park to improve and enhance the public park
- Gardner Pilot Academy to enhance the outside space and classroom for students, families, and the community
- Pollinator Networks to expand pollinator gardens



The outdoor classroom at the Gardner Pilot Academy, July 2021



“Collins Park is dedicated in honor of United States Army Staff Sergeant James Finbar Collins, who gave his life in World War II. With help from the Harvard Public Realm Flexible Fund, the park is being restored to a place that is welcoming to residents and used as a gathering spot for quiet contemplation.”

– Ross Miller
Allston-based Artist

“The Gardner Pilot Academy (GPA) is a community hub school. Central to our mission, we serve as a bridge between our families and resources in the surrounding community. As we strive to close opportunity gaps and eliminate barriers for our students and families, we work to ensure that our programming is of the highest quality and that our physical spaces meet the needs of all learners. Thanks to the Public Realm Flexible Fund, we’ve been able to create new outdoor classroom and recreational facilities, and deliver programming for GPA students, families, and neighbors.”

– Lauren Lafferty
Director of Extended Services at Gardner Pilot Academy



Gardner Pilot Academy, July 2021



Gardner Pilot Academy, July 2021



Harvard Allston Partnership Fund

The Harvard Allston Partnership Fund (HAPF) was created by Harvard University and the City of Boston in collaboration with the community to support local nonprofit organizations and leverage their expertise in delivering a wide range of programs from neighborhood improvement projects to educational and enrichment activities. Since the fund was established in 2008, Harvard has partnered with 41 local nonprofits and distributed over \$1.3 million in grants.

2020–2021

11
nonprofit
awardees

\$100k
in grants

Since 2008

\$1.3M
in grants

147
grants

41
nonprofit partners



“As an organization committed to advancing economic opportunities for immigrant families, one of the challenges we face at the Brazilian Worker Center is meeting the evolving needs of the community, especially throughout the COVID-19 pandemic. Consistent grant opportunities like the Harvard Allston Partnership Fund combined with responsive initiatives like the [Harvard University Allston-Brighton Emergency Response Grant](#) enabled us to provide more resources and support our neighbors in need. We hope to see more of these valuable partnerships that benefit everyone in our community.”

– **Natalicia Tracy**
Executive Director
Brazilian Worker Center

2020–2021 HAPF Grant Recipients

Allston Brighton Community Development Corporation
Awarded grant to develop community outreach workshops on urban planning.

Allston Brighton Food Pantry
Awarded grant to fight food insecurity and better meet community needs due to the COVID-19 pandemic.

Boston String Academy
Awarded grant to provide high quality musical instruction to local youth.

Brazilian Women’s Group
Awarded grant to support leadership and professional development programming for women and to support the distribution of food, clothes, and masks during the COVID-19 pandemic.

Brazilian Worker Center
Awarded grant to support food and essential items for community residents in need.

CommonWheels Bicycle Cooperative
Awarded grant to support bike programs in Allston-Brighton.

Family Nurturing Center
Awarded grant to maintain existing playgroups serving Allston-Brighton.

Gardner Pilot Academy
Awarded grant to support families in need.

Oak Square YMCA
Awarded grant to support community-based virtual learning and enrichment programming as well as hunger prevention resources for Allston-Brighton families.

Open Door Soup Kitchen
Awarded grant to support the food pantry for families in need during the COVID-19 pandemic.

West End House
Awarded grant to support the Family Food Program, providing bi-weekly groceries to Allston-Brighton families.

Partners

Harvard is pleased to recognize our partners from the Boston community and across campus that contribute to the wide range of programming and make our relationship with the Allston-Brighton neighborhood meaningful.

Programmatic Partners

Community:

A Far Cry
Action for Boston Community Development
Allston Brighton Adult Education Coalition
Allston Brighton Community Development Corporation
Allston Brighton Health Collaborative
Allston-Brighton Neighborhood Opportunity Center
Allston Civic Association
Allston Village Main Streets
Artisan's Asylum
Brighton Main Streets
Brighton Marine
Century Bank
Charles River Community Health
Charlesview, Inc.
CommonWheels
Family Nurturing Center
Gardner Adult Education Program
Jackson Mann Community Center
Local Enterprise Assistance Fund
McNamara House
New England Foundation for the Arts - Creative City
OneGoal
Presentation Foundation
Private Industry Council (PIC)
SCORE Boston

YMCA of Greater Boston, Oak Square branch
Young Audiences of Massachusetts

City of Boston:

Boston Housing Authority
Boston Parks and Recreation Department
Boston Planning and Development Agency
Boston Police Department
Boston Public Library System

- Honan-Allston Library

Boston Public Schools

- Boston Green Academy
- Brighton High School
- Edison K-8 School
- Gardner Pilot Academy
- Horace Mann School for the Deaf and Hard of Hearing
- Jackson Mann K-8 School
- Mary Lyon School

Department of Neighborhood Development
Mayor's Office of Arts and Culture

- Boston Cultural Council
- Mayor's Office of Neighborhood Services
- Mayor's Office of Workforce Development

Harvard Partners

American Repertory Theater
Derek Bok Center for Teaching and Learning
Harvard ArtLab
Harvard Athletics
Harvard Business School
Harvard Extension School
Harvard Graduate School of Education
Harvard Human Resources

- Center for Workplace Development

Harvard John A. Paulson School of Engineering and Applied Sciences
Harvard Planning and Project Management
Harvard Real Estate
Harvard Strategic Procurement
Harvard University Center for Wellness and Health Promotion
Harvard University Employee Credit Union
Harvard University Faculty of Arts and Sciences

- Department of Molecular and Cellular Biology
- Harvard Art Museums
- Harvard Ceramics Program

- Harvard Museums of Science & Culture
 - Harvard Museum of Natural History
 - Harvard Peabody Museum of Archaeology & Ethnology
- Harvard-Smithsonian Center for Astrophysics

Harvard University Information Technology
Harvard University Police Department
HarvardX

Advisory Boards & Committees 2020-2021

Harvard Allston Task Force

Lea Beaulieu
Troy Brogan
John Cusack
Dan Daly
Rita DiGesse
Anthony D'Isidoro
Mike Hanlon
Bruce Houghton
Ed Kotomori
Cindy Marchando
Tim McHale
Millie McLaughlin
Barbara Parmenter
Christine Varriale
Brent Whelan

Harvard Ed Portal Advisory Board

Marie Ace
Keith Collar
Victoria D'Souza
Ben Franco
Mark Handley
Erica Herman
Thomas Jehn
Susan Johnson
Fatima Masrar Kayi
Lisa McDonough
Lauren Lafferty
Conor Newman
Pia Sorensen
Maile Takahashi
Rita Vidiya
Jenyffer Alvarez Zumaran

Workforce & Economic Development Advisory Board

Timnit Abraha
Gerald Autler
Jim Barrows
John Bruno
Alex Gray
Mark Handley
Jane McHale
Conor Newman
Trinh Nguyen
Michele Rocray
Maile Takahashi

Harvard Allston Public Realm Flexible Fund Executive Committee

Gerald Autler
Leah Beaulieu
Johanna Bernstein
Sabrina Dorsainvil
Mark Handley
Bruce Houghton
Mary LaRossee
Elsa Rojas

Harvard Allston Partnership Fund Advisory Board

Gerald Autler
Jennifer Barrios
Jim Barrows
John Bruno
Daniel Daly
Julia Eskew
Mark Handley
Margaret Kelley
Wayne MacKenzie
Lisa McDonough
Conor Newman
Karen Smith
Maile Takahashi

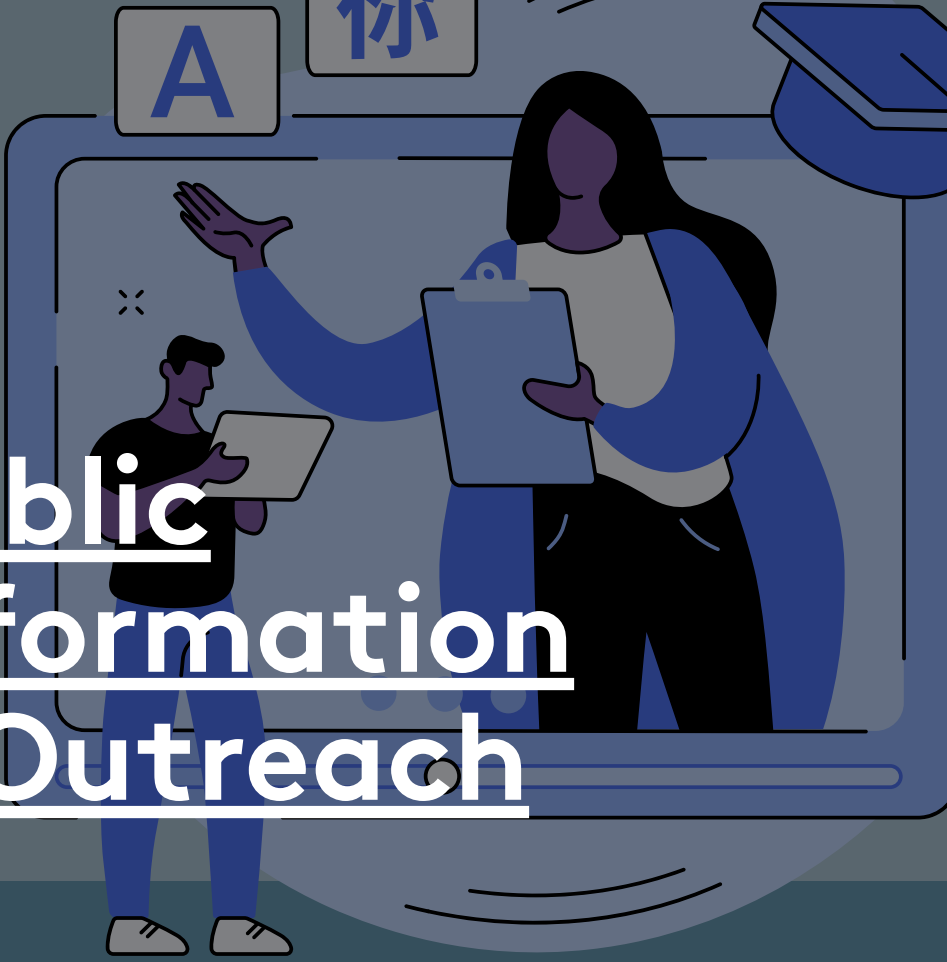
Harvard Ed Portal Team

Eve Alpern, Arts & Culture
Jim Barrows, Economic Development
Philana Brown, Arts & Culture
Tessa Castellani, Communications
Jason Clark, Ed Portal Manager & Health & Wellness
Jean Dao, Public School Partnerships
Ethan Davies, Youth Programming & Mentoring
Leah Dodell, Digital Learning & HarvardX for Allston
Ben Franco, Ed Portal Assistant Director
Abigail Hadfield, Communications and Marketing Intern
Dan Hasset-Salley, Design
Susan Johnson, Youth Programming & Mentoring
Joan Matsalia, Public School Partnerships
Cláudia O'Brien, Reception
Brigid O'Rourke, Communications & Media Inquiries
Lorena Paulino De La Cruz, Reception
Libna Ramos, Public School Partnerships
Michele Rocray, Workforce Development
Maile Takahashi, Director of Community Programming

A special thanks to **Natalicia Tracy, Lauren Lafferty, Ross Miller, Sheila Dillon and the entire Harvard Ed Portal team who contributed to this report.**

Photos provided by **Harvard Public Affairs & Communication and Stew Milne Photography.**

Public Information & Outreach



By the Numbers

53
Ed Portal newsletters sent this past year

1,674
posts shared by Harvard on the @harvardlocal Twitter page

355
posts shared on the Harvard Ed Portal Facebook page

78
posts and stories highlighting the virtual Allston-Brighton Winter Market on Instagram



Communicating with Impact
By Tessa Castellani
Marketing and Digital Communications Associate

This past year, the Harvard Ed Portal set into a full sprint to transition community programming and resources online. Our focus remained on fostering positive change through new ways of connecting people. Outreach efforts included:

- new webpages that elevated online exhibitions through interactive photo and video galleries;
- an increased number of newsletters for small businesses and public school educators, featuring timely resources and updates;
- free workshops for high school students to build academic, workforce, and general life skills;
- resources focused on boosting capacity for local artists, promoting health and financial wellbeing, connecting small businesses to useful tools, and supporting the needs of job seekers, students, and families.

Additionally, across the social media channels, we broadened outreach using polls, quizzes, and interactive features to communicate information and collect feedback on programming. This broadly expanded digital presence provided clarity, helped build resiliency, and reached more of our Allston-Brighton neighbors.



Engaging English Language Learners in Allston-Brighton
By Lorena Paulino De La Cruz
Public School Partnerships Staff Assistant

The Harvard Ed Portal is a place where everyone is welcome and our team is continually focused on nurturing this vision and broadening outreach across Allston-Brighton. This past year, for example, the Ed Portal formed an English Language Learners (ELL) subcommittee to assess the needs of the Spanish and Portuguese-speaking community. So far, we've customized the Ed Portal website to automatically translate program offerings into [Spanish, Portuguese, and other foreign languages](#), as well as translated most program applications to increase accessibility. We also helped design targeted programs to reach non-English speakers, which include:


- a presentation skills workshop for non-native English speakers;
- an "introduction to Zoom in Spanish" workshop;
- workshops in Spanish focused on the importance of credit cards and credit reports;
- deciphering financial aid for students and families, offered in Spanish; and
- Zumba classes to promote personal wellbeing.

As the work of the ELL subcommittee continues, I'm hopeful that Ed Portal programming will reach more people in innovative and engaging ways.



Giving Back: Outreach to the Portuguese-speaking Community
By Cláudia O'Brien
Harvard Ed Portal Staff Assistant

At the Harvard Ed Portal, we are constantly looking for ways to strengthen community relationships and celebrate everyone's background. An aspect I enjoy most about my work, is translating programs and scholarship applications in my native language, Portuguese. I've always wanted to give back to the community that made me feel welcomed when I moved to Boston, and translation is my way of making a small contribution. Using translated materials allows us to engage the community and to better understand the meaning of words and expressions. More importantly, it helps us feel connected to each other. As I look forward to this work, my hope is to build relationships that allow Portuguese speakers to connect with and benefit from the wealth of programming and resources at the Ed Portal.



Connect with us!

edportal.harvard.edu

224 Western Ave., Allston

f in
Harvard Ed Portal

@ @
@harvardlocal

What's New in the Neighborhood

Going beyond the University's cooperation agreements to engage the Allston-Brighton community and contribute to our shared neighborhood



Welcoming Artisan's Asylum to Allston

As part of the University's commitment to keeping the arts central to Allston, in early 2021, Harvard announced that Artisan's Asylum, a local nonprofit arts collaborative, will make Allston its new home. In addition to bringing a cutting-edge, innovative makerspace to the neighborhood, the move sets the stage for a significant long-term partnership.



Harvard John A. Paulson School of Engineering and Applied Sciences Opens its Doors

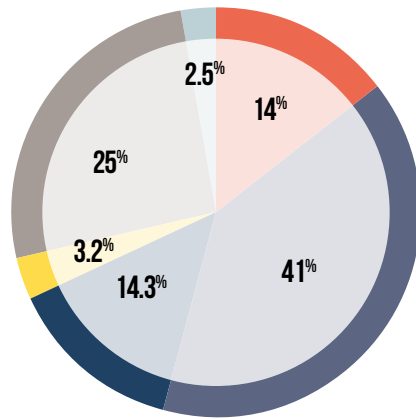
The new Science and Engineering Complex brings together a diverse population – Allston-Brighton residents, visitors of the Honan-Allston Branch Library, and Harvard affiliates – to gather and enjoy the open green space.



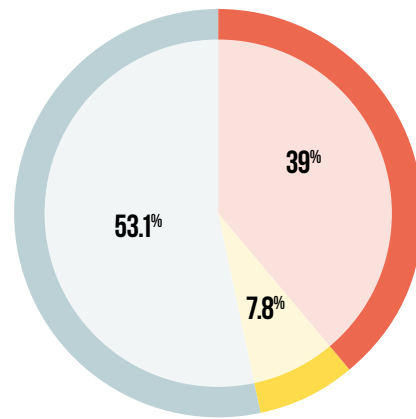
Cooperation Agreement Budget Overview

Spending through 6/30/2021

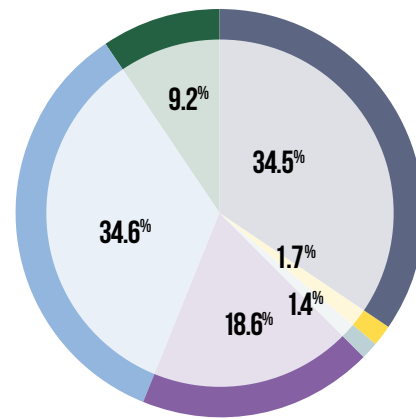
2008 Science Complex Cooperation Agreement (4/2/08)



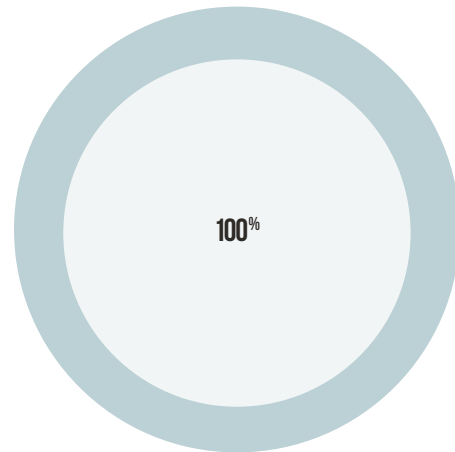
28 Travis Street Cooperation Agreement (1/2/14)



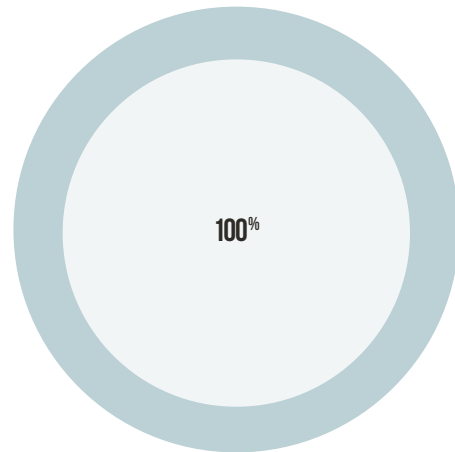
IMP Cooperation Agreement (7/10/14)



Harvard Life Lab Cooperation Agreement (4/8/16)



Harvard ArtLab Cooperation Agreement (4/24/18)



- Housing Linkage
- Public Realm & Park Maintenance
- Workforce Development
- Jobs Linkage
- Education Programs
- Partnership Fund
- Housing Fund / DIP / Linkage
- Donation of Brookline Machine
- Ed Portal (formerly Education, Transformative Project & Workforce Development)*

*Ed Portal reflects spending in the categories of Education, Transformative Project, and Workforce Development lines as reported in previous years. These categories reflect on the operations of the Harvard Ed Portal.

2008 SCIENCE COMPLEX COOPERATION AGREEMENT FUND

| CATEGORIES | 2008 COOPERATION AGREEMENT FUND | SPENT THROUGH JUNE 30, 2021 | REMAINING BALANCE |
|--------------------------------|---------------------------------|-----------------------------|--------------------|
| Housing Linkage | 3,848,430 | 3,334,749 | 513,681 |
| Public Realm | 9,700,000 | | 627,301 |
| Portsmouth Park | | 60,000 | |
| Western Ave Sidewalk and Trees | | 1,238,498 | |
| Barry's Corner Imp & Grove | | 1,448,016 | |
| Farmer's Market | | 222,655 | |
| Library Park | | 3,203,530 | |
| Rena Path and Park | | 2,200,000 | |
| Longfellow Park | | 700,000 | |
| Workforce Development | 3,670,000 | 3,382,926 | 287,074 |
| Jobs Linkage | 767,730 | 767,730 | - |
| Education Program | 4,786,000 | 5,960,998 | (1,174,998) |
| Partnership Fund | 500,000 | 589,231 | (89,231) |
| Library Park Maintenance | 2,200,000 | 640,689 | 1,559,311 |
| TOTAL | \$25,472,160 | \$23,749,023 | \$1,723,137 |

28 TRAVIS STREET COOPERATION AGREEMENT FUND

| CATEGORIES | 28 TRAVIS STREET AGREEMENT FUND | SPENT THROUGH JUNE 30, 2021 | REMAINING BALANCE |
|------------------------------|---------------------------------|-----------------------------|-------------------|
| Housing Linkage | 413,300 | 415,449 | (2,149) |
| Jobs Linkage | 82,879 | 82,879 | - |
| Partnership Fund (FY14-FY18) | 554,000 | 565,088 | (11,088) |
| TOTAL | \$1,050,179 | \$1,063,416 | (\$13,237) |

HARVARD LIFE LAB COOPERATION AGREEMENT FUND

| CATEGORIES | 2016 LIFE LAB COOPERATION AGREEMENT FUND | SPENT THROUGH JUNE 30, 2021 | REMAINING BALANCE |
|------------------|--|-----------------------------|-------------------|
| BPS Contribution | 60,000 | 84,158 | (24,158) |
| TOTAL | \$60,000 | \$84,158 | (24,158) |

2014 IMP COOPERATION AGREEMENT FUND

| CATEGORIES | 2014 IMP COOPERATION AGREEMENT FUND | SPENT THROUGH JUNE 30, 2021 | REMAINING BALANCE |
|---|-------------------------------------|-----------------------------|---------------------|
| Public Realm | 9,750,000 | | 2,243,957 |
| Flexible Fund | | 3,486,192 | |
| SFR | | | |
| Study | | 169,851 | |
| Two Crossings | | 3,350,000 | |
| Everett Street Contribution | | 500,000 | |
| Ray Mellone Park Maintenance | | | |
| Jobs Linkage | 2,000,000 | 366,375 | 1,633,625 |
| Partnership Fund (FY19-FY23) | 500,000 | 309,880 | 190,120 |
| Housing Fund | 3,000,000 | 3,000,000 | - |
| DIP/Linkage | 11,000,000 | 1,040,232 | 9,959,768 |
| Donation of Brookline Machine Site | 2,000,000 | 2,000,000 | - |
| Ed Portal (formerly Education, Transformative Project & Workforce Development)* | 14,750,000 | 7,512,956 | 7,237,044 |
| Education | 4,500,000 | | |
| Transformative Project | 8,250,000 | | |
| Workforce Development | 2,000,000 | | |
| TOTAL | \$43,000,000 | \$21,735,487 | \$21,264,513 |

*Ed Portal combines spending in the categories of Education, Transformative Project, and Workforce Development lines as reported in previous years.

ARTLAB COOPERATION AGREEMENT FUND

| CATEGORIES | ARTLAB COOPERATION AGREEMENT FUND | SPENT THROUGH JUNE 30, 2021 | REMAINING BALANCE |
|----------------------------|-----------------------------------|-----------------------------|-------------------|
| Cultural Fund Contribution | 50,000 | 40,000 | 10,000 |
| TOTAL | \$50,000 | \$40,000 | \$10,000 |

Status of Cooperation Agreements

Through 6/30/2021

| SCIENCE COMPLEX COOPERATION AGREEMENT (SIGNED 4/2/08)* | | | |
|--|--------------|--|--|
| *Cooperation Agreement amended and restated 6/14/17 as part of Science and Engineering Complex project approval. | | | |
| Description | Budget | Obligation and Timing | Status |
| TRANSPORTATION ACCESS PLAN AGREEMENT | | | |
| Develop Transportation Access Plan Agreement | | Science and Engineering Complex (SEC) project requires a TAPA prior to opening. | Complete as of 4/10/17. |
| TRANSPORTATION-RELATED COMMITMENTS | | | |
| Pedestrian and Bicycle Access Improvements | | Implement measures to facilitate walking and bicycling access. | Complete. |
| Transit Improvements: Public Transit | | Work with MBTA to develop recommendations for improvements to service in the neighborhood. | Complete. |
| Transit Improvements: Shuttle Service | | Expand connections between Harvard campuses. | There will be shuttle service to the new SEC building. |
| Transit Improvements: Expanded Shuttle Service | | Harvard to study public access to Harvard shuttle services. | Complete. Harvard shuttle opened to public as part of 28 Travis Street project. |
| Transportation Demand Management Program | | Implement TDM program for project users. | Tied to occupancy of SEC. |
| Roadway Infrastructure Improvements | | Construct new roadways as part of project. | Complete. |
| LINKAGE | | | |
| Housing | \$3,334,779 | Annual payments began in 2011. | Complete. |
| Jobs | \$667,749.50 | Payments made in 2009 & 2010. | Complete. |
| PILOT | | | |
| Negotiate PILOT agreement | | Meet annually with City of Boston to discuss PILOT. | Complete and Ongoing. Harvard engages in regular discussions with the City of Boston as it aims to strike a balance between direct programming and reliable financial contributions that support basic city services and enhance the quality of life for Boston residents. |
| PUBLIC REALM IMPROVEMENTS | | | |
| Portsmouth Park | \$60,000 | Fund improvements to Portsmouth Park. | Complete. Check issued to Parks Department in 2006. |
| Western Avenue Sidewalk and Tree Plantings | \$1,200,000 | Improve Western Avenue through new sidewalks and tree plantings. | Complete. |
| Barry's Corner Improvements | \$1,800,000 | Provide landscaping and streetscape improvements, including Ed Portal landscape and Citgo landscape. | Complete and Ongoing. The remaining budget is ~\$350,000. |
| Longfellow Path | \$700,000 | Construct Longfellow Path. Due at Occupancy Permit for SEC. | Complete. Implementation was coordinated with Smith Field Master Plan. |
| Rena Path | \$700,000 | Construct Rena Path. Due at Occupancy Permit for SEC. | Complete. |

| SCIENCE COMPLEX COOPERATION AGREEMENT (SIGNED 4/2/08)* | | | |
|--|------------------------------|--|---|
| *Cooperation Agreement amended and restated 6/14/17 as part of Science and Engineering Complex project approval. | | | |
| Description | Budget | Obligation and Timing | Status |
| Public Events | \$240,000 (\$24,000/year) | Program public events in Barry's Corner area. | Ongoing. Arts First Allston happened for the 2 nd year in 2019 and included a new mural installation in front of the Ed Portal. This year these events were cancelled due to COVID-19. |
| Library Park and Maintenance for 10 years | Total of \$5,700,000 | Design and build one-acre park. Maintain park for 10 years. | 1.74-acre Ray Mellone Park opened in 2010. This is Year 10. |
| Rena Park Design and Interim Improvements | \$1,500,000 | Due at Occupancy Permit for SEC. | Complete. |
| Stadium Way and Rena Street Extension | | Due at Occupancy Permit for SEC. | Complete. |
| Design and reconstruct Western Avenue (east of Barry's Corner) | | Design by 2011. Construction by April 2018. | Ongoing. The first phase of the Western Avenue improvements (Academic Way to Hague Street) is complete. |
| Design and reconstruct North Harvard Street (north of Barry's Corner) | | Design by 2011. Construction by April 2018. | Complete. |
| Significant Improvement of Properties | | Replacement and removal of fences and planting trees. | Complete. |
| Additional interim public realm improvements in Barry's Corner | | Provide additional improvements by December 31, 2013. | Complete. |
| SURVEY/NEEDS ASSESSMENT | | | |
| Conduct Survey/Needs Assessment | \$500,000 | Conduct Survey/Needs Assessment. | Complete. Conducted survey in 2008. |
| EDUCATION | | | |
| Create and fund Ed Portal | | Design, build, and fund Ed Portal. | Complete. Ed Portal opened in July 2008. |
| Computer Lab at Ed Portal | \$100,000 | Build computer lab at Ed Portal. | Complete. |
| Ed Portal Coordinator | | Hire staff person. | Complete. |
| Form Ed Portal Advisory Board | | Form Ed Portal Advisory Board. | Complete. |
| Programming | \$1,100,000 | Provide programming for the Ed Portal including tutoring, mentoring, Secondary School Scholarships, and Summer Athletic Camps Scholarships. | Complete. |
| Gardner School | \$120,000 | Partner with the Gardner School for ten years of activities. | Complete. |
| Adult Education | \$215,000 | Continue and expand adult education programs including Allston-Brighton community scholars, new lecture series, and computer teaching classroom. | Complete. |
| Outreach | \$250,000 over 10 years | Provide updates through website, letters, Allston Update, Ed Portal flyers, and emails. | Complete. |

| SCIENCE COMPLEX COOPERATION AGREEMENT (SIGNED 4/2/08)* | | | |
|--|-----------------------------------|--|--|
| *Cooperation Agreement amended and restated 6/14/17 as part of Science and Engineering Complex project approval. | | | |
| Description | Budget | Obligation and Timing | Status |
| PARTNERSHIP FUND | | | |
| Partnership Fund | \$500,000 (\$100,000/year) | Checks issued to BRA annually, 2008-2013. | Complete. |
| EMPLOYMENT | | | |
| Construction Employment | | Prepare Boston Residents Construction Employment Plan. | Complete. Signed 3/8/17. |
| Permanent Employment | | Prepare MOU/First Source Agreement. | Complete. Signed 4/9/08. |
| Workforce Program Development | \$200,000 | Develop workforce development programs. | Ongoing. Year 10 Complete. |
| Rent for Resource Center | \$600,000 | Provide in-kind rent for 2009 through 2019. | Complete. The Career Resource Center closed in 2015 and the programs were moved to the new Harvard Ed Portal at 224 Western Avenue. The remaining in-kind rent is supporting the Workforce Development program at the Harvard Ed Portal. |
| Operation of Resource Center | \$1,000,000 | Fund Operation of Resource Center for 10 years. | Complete. The Career Center was closed in 2015 and a Workforce Development specialist was hired to work out of the Harvard Ed Portal. This work continues in the Ed Portal. See Appendix D for complete programming list. |
| Human Resource staff person | | Hire staff person. | Complete. |
| Advertising of workforce programs | \$50,000 | Advertise workforce programs. | This has been rolled into the Ed Portal's outreach and marketing efforts. |
| Workforce Development Classes (Computer Classes) | \$1,000,000 (\$100,000/year) | Offer workforce development classes for 10 years. | Complete. |
| LONG TERM PARTNERSHIP | | | |
| Evaluate options for a transformative project | | Transformative project evaluation to happen prior to filing a new IMP. | Complete. Transformative project evaluation was included in 2013 IMP. |
| Collaborate on planning West of Barry's Corner. | | Participate in City's Community Wide Planning process. | Complete. In addition, Harvard is currently participating in the City's ongoing Western Avenue Corridor Study and Rezoning process. |
| OTHER | | | |
| Contractor Pre-Apprenticeship Program | \$30,000/year (total of 120K) | Provide 5 slots/year. | Ongoing. The program is tailored for each person who is interested in the Trades. The program was on hold during 2020 and will be resumed in 2021. |
| Retail Use Restriction | | Use best efforts to lease retail space to local businesses which are retail and restaurant uses. | 114 Western Ave amenity space leased to Fuel America Coffeehouse. |
| Day Care Facilities | Valued at \$450,000 over 10 years | | Upon opening new childcare at SEC, 15% of slots will be made available to Allston-Brighton residents. |
| Construction Management Plan | | Prior to issuance of a full building permit. | Complete. |
| Wireless Communications | | Review if roof of Science is suitable location for wireless communications equipment. | The Project team has determined that the rooftop of the SEC is not a suitable location for wireless communications equipment. |

| 28 TRAVIS STREET COOPERATION AGREEMENT (SIGNED 1/2/14) | | | |
|--|--|--|--|
| Description | Budget | Obligation and Timing | Status |
| Submit Construction Management Plan | | Submit CMP. | Complete. |
| Submit a Transportation Access Plan Agreement | | Submit TAPA. | Complete. |
| Pay linkage payments | Approximately \$500,000 | | Complete. |
| Construction Employment | | Prepare Boston Residents Construction Employment Plan. | Complete. |
| Voluntary Employment Opportunity Plan | | Prepare Voluntary Employment Opportunity Plan. | Complete. |
| Maintenance and Operation | | Keep the site in good and safe condition and repair. | Ongoing. |
| No Entrance/Exit on Travis Street | | Keep Travis Street entrance closed. | Complete. |
| Rena Park Planning | Funded through Science Cooperation Agreement | Begin planning and identify implementable improvements that will begin construction in 2014. | Complete. |
| Prepare Comprehensive Support Services Plan | | Prepare Support Services Plan for inclusion in IMP. | Complete. Included in IMP. |
| Relocate services from 28 Travis | | Implement recommendations from Comprehensive Support Services Plan. | Complete. Memo on initial assessment provided to BPDA on 12/23/19. |
| Restrict building use from 12:00 midnight to 6:00 AM | | Restriction in place with opening of building. | Ongoing. |
| Extend Partnership Fund | \$500,000 (\$100,000/year for five years) | Extend Partnership Fund grants for five years, from 2013 through 2018. | Complete. |
| Provide public access to Harvard shuttle system | | Harvard to study public access to Harvard shuttle services. | Complete. |
| Identify location for relocated Ed Portal | | Identify location for relocated Ed Portal. | Complete. |

| IMP COOPERATION AGREEMENT (SIGNED 7/10/14) | | | |
|--|--|--|---|
| Description | Budget | Obligation and Timing | Status |
| PUBLIC REALM | | | |
| Everett Street Improvements | \$500,000 | Provide funding for City-led project for improvements to Everett Street. | Complete. |
| Soldiers Field Road Crossings | \$150,000 for study and \$3,350,000 for implementation | Study phase to be conducted in 2014 to be followed by an implementation phase. | Complete and Ongoing. Administration of the project and crossing design by the State remains ongoing. Everett Street crossing design work advancing. Telford Street crossing design paused. |
| Maintenance of Ray Mellone Park | \$400,000 | Extend maintenance of Ray Mellone Park from 2021 through 2025. | Ongoing. |
| Flexible Fund | \$5,350,000 | Develop flexible fund for public realm improvements. Funds will be spent over ten years but there is a two-year planning period. | Ongoing. Executive Committee formed and four rounds of grant recipients designated, including five recipient organizations receiving grants in FY2021. |

| IMP COOPERATION AGREEMENT (SIGNED 7/10/14) | | | |
|--|---|--|---|
| Description | Budget | Obligation and Timing | Status |
| Interim improvements to Grove | Funded through Science Cooperation Agreement | Make immediate interim improvements to the Grove. | Complete. Grove opened in Summer 2014. |
| Commence Rena Park planning | \$1,500,000 budget from Science Cooperation Agreement | Continue to plan and identify implementable improvements that will begin construction in 2014. | Complete. |
| Greenway | | Conduct planning process in 2014 for exploring strategies for interim implementation of the Greenway. | Complete. Memo on Greenway Planning submitted to BPDA on 12/15/14. |
| EDUCATION | | | |
| Ed Portal | | Continue to operate and fund the Ed Portal through 2024. | Ongoing. |
| Programming | \$4,000,000 total | Extend academic and enrichment programming (including Mentoring and Community Scholarships) in the Ed Portal through 2024. | Ongoing. |
| Gardner Pilot Academy | | Extend partnership program with Gardner Pilot Academy through 2024. | Ongoing. |
| Adult Education | | Extend Adult Education programs through 2024. | Ongoing. |
| Public Information and Outreach | | Extend public information and outreach program through 2024. | Ongoing. |
| Contribution to BPS | \$500,000 | Contribution to BPS in support of a capital project at the GPA. | Complete. |
| WORKFORCE DEVELOPMENT | | | |
| Workforce Development | \$2,000,000 | Extend Workforce Development program from Science Cooperation Agreement through 2024. | Ongoing. Services supporting workforce development in the Allston-Brighton neighborhood will continue at the Harvard Ed Portal. |
| Jobs Linkage | \$2,000,000 | | Ongoing. Payments are part of each IMP project that is required to pay linkage. |
| PARTNERSHIP FUND | | | |
| Harvard Allston Partnership Fund | \$500,000 | Five-year extension of Partnership Fund for 2019-2023. | Ongoing. Year 3 complete. |
| HOUSING FUND | | | |
| Harvard Allston Housing Fund | | Contribute \$3,000,000 to assist third-party organization in housing stabilization. | Complete. Supports funding of the All Bright Homeownership Program. See Appendix C. |
| HOUSING LINKAGE | | | |
| Housing Linkage | | | Ongoing. Payments are part of each IMP project that is required to pay linkage. |

| IMP COOPERATION AGREEMENT (SIGNED 7/10/14) | | | |
|--|-------------|--|--|
| Description | Budget | Obligation and Timing | Status |
| DONATION OF BROOKLINE MACHINE | | | |
| Donation of Brookline Machine site | \$2,000,000 | | Complete. |
| TRANSFORMATIVE PROJECT | | | |
| Physical Space & Operations | \$8,250,000 | Relocate Ed Portal to 224 Western and transform space into Transformative Project by the end of 2015. | Complete. |
| Programming | | Programs including expanded marquee Ed Portal programming, AllstonX, Health & Wellness, Arts, Public School Partnerships, Athletics, North Allston/ North Brighton Workforce and Business Development Program. | Ongoing. See Appendix D for complete program list. |
| Workforce and Economic Development | | Enhance Workforce Collaborative Programs. | Ongoing. See Appendix D for complete program list. |
| DEVELOPMENT AGREEMENTS | | | |
| PILOT | | Extend existing PILOT commitment to new IMP projects. | Complete and Ongoing. Harvard engages in regular discussions with the City of Boston as it aims to strike a balance between direct programming and reliable financial contributions that support basic city services and enhance the quality of life for Boston residents. |
| Transportation Access Plan Agreement | | Prepare TAPA for each IMP project. | Institutional TAPA signed. |
| Construction Management Plan | | Prepare CMP for each IMP project. | Institutional CMP Guidelines prepared. CMPs submitted for individual IMP projects. |
| Construction Employment | | Prepare Boston Residents Construction Employment Plan for each IMP project. | Part of each project. Agreements submitted for individual IMP projects. |
| Permanent Employment | | Prepare Permanent Jobs Agreements for each IMP project. | Part of each project. Agreements submitted for individual IMP projects. |
| TRANSPORTATION | | | |
| Design of Stadium Way | | Develop 25% design of Stadium Way by November 2015. | Complete. |
| Evaluate construction support area | | Evaluate construction support area. | Ongoing. Interim measures have been implemented to support completion of SEC. |
| Special events study | | Prepare study by April 30, 2014. | Complete. |
| Study implementation of parking reserve | | Prepare parking analysis memo. | Complete. |
| Analysis of alternatives for surface parking | | Prepare parking analysis memo. | Complete. |
| Extend TDM measures to tenants | | Extend TDM measures to commercial tenants in Allston. | Complete. Harvard joined TMA on behalf of certain commercial tenants. Memo describing measures submitted to BTM on 7/10/15. |
| Prepare transportation and parking analysis program, scope to be determined with BTM | | Scope of analysis is essentially the items listed above. | Complete. |
| Assist BTM in residential parking | | Assist BTM during 2014. | Complete. BTM implemented additional residential permit parking. |

| IMP COOPERATION AGREEMENT (SIGNED 7/10/14) | | | |
|--|--------|---|--------------------------------|
| Description | Budget | Obligation and Timing | Status |
| ANNUAL REPORT | | | |
| Submit Annual Report | | Annual report submitted to BPDA and Task Force. | Due by August 31 of each year. |

| HARVARD LIFE LAB COOPERATION AGREEMENT (SIGNED 4/8/16) | | | |
|--|----------|---|---|
| Description | Budget | Obligation and Timing | Status |
| EDUCATION | | | |
| Programming | | Programming of events at the Ed Portal and i-Lab. | Ongoing. |
| Laptop Access | \$60,000 | Partner with BPS to provide a grant to fully fund the purchase of Chromebook laptops. | Complete. |
| PUBLIC REALM | | | |
| Ice Cream Social | | Host an annual event for the Allston-Brighton community for five years. | Ongoing. No Ice Cream Social due to COVID-19. |

| HARVARD ARTLAB COOPERATION AGREEMENT (SIGNED 4/24/18) | | | |
|---|----------------------------------|---|--|
| Description | Budget | Obligation and Timing | Status |
| Support for Local Allston Brighton Artists | \$10,000 per year for five years | Starting in 2018, City of Boston grant program to support professional development and participatory arts learning experiences. | Year 3 of 5 complete. |
| Community Educational Programming | | Provide programming for five years. | Year 2 complete. The ArtLab "soft" opened in Spring 2019. Official opening, including community opening event, in Fall 2019. |

Housing Stabilization Fund Update

Prepared By Allston Brighton Community Development Corporation

ALLSTON ESPLANADE LLC

STATEMENT OF ACTIVITIES JULY 2020 - JUNE 2021

| | | |
|-----------------------|--|----------------|
| INCOME | | |
| Grant funds | | 358,525 |
| Interest | | 2,483 |
| TOTAL INCOME | | <u>361,008</u> |
| EXPENSE | | |
| Staffing | | 30,528 |
| Professional services | | 11,032 |
| Marketing and fees | | 4,263 |
| Maintenance | | 3,285 |
| Loss on sales | | 311,900 |
| TOTAL EXPENSE | | <u>361,008</u> |
| SURPLUS/(DEFICIT) | | 0 |

STATEMENT OF FINANCIAL POSITION JUNE 30, 2021

| | | |
|---|--|------------------|
| ASSETS | | |
| CURRENT ASSETS: | | |
| Cash-program operating account | | 411,814 |
| Cash-emergency account | | 98,544 |
| Cash and cash equivalents-reserve account | | 1,025,217 |
| Deposits | | 12,000 |
| Accounts receivable | | 155 |
| Prepaid expenses | | 3,456 |
| TOTAL CURRENT ASSETS | | <u>1,551,186</u> |
| | | |
| TOTAL ASSETS | | <u>1,551,186</u> |
| LIABILITIES AND NET ASSETS | | |
| CURRENT LIABILITIES: | | |
| Accounts payable and accrued expenses | | 7,330 |
| Due to related parties (ABCDC) | | 8,027 |
| TOTAL CURRENT LIABILITIES | | <u>15,357</u> |
| NET ASSETS: | | |
| Net assets without donor restrictions | | 17,808 |
| Net assets with donor restrictions | | 1,876,546 |
| Change in net assets year-to-date | | (358,525) |
| TOTAL NET ASSETS | | <u>1,535,829</u> |
| TOTAL LIABILITIES & NET ASSETS | | 1,551,186 |

Community Programming Catalog

July 2020 – June 2021

Ongoing and Offered Throughout the Year

- Virtual athletic memberships for Ed Portal members
- Monday Job Seekers Connections
- Yoga & Strengthening Classes
- Youth Programing
 - 1st & 2nd Grade Club
 - Movement & Wellness
 - Connections Club: Grade 3-5 and 6-8
 - Art Making with Imagination, Joy & Community
- Allston Brighton Scholarships to the Harvard Extension School (20 scholarships)
- Art Exhibits

July 2020

- Introduction to Zoom for Smartphones & Tablets
- Debt Repayment in the Midst of COVID-19
- How to Write A Blog with Brigid O'Rourke
- Youth Programing – Virtual Summer Explorations (3 - 1 weeklong sessions)
 - Programing for Grades 3-5
 - Programing for Grades 6-8
- Scholarships to A.R.T. summer camps
- Scholarships to HMNH summer camps

August 2020

- Advanced LinkedIn Profile Development with Sabrina Woods

September 2020

- Memory, Social Justice, and Mindfulness (four sessions)
- Secure and Effective Remote Learning with Joseph Blatt & Harvard IT
- Financial Wellness 2020: Improving Money Habits
- Portraits in Pajamas: Live Event for “Fresh Breaths: Portrait of Sabrina”
- Test Your Career Path: Using Assessments for Future Direction

October 2020

- Free Academic Support for Students in Grades 3–8 (weekly)
- Financial Wellness 2020: Budgeting 101
- Research as Part of Your Job Search
- The Brand Called You!
- Financial Wellness 2020: Debt Management 101
- Building Career Connections: Introduction to American Networking
- Digital Scavenger Hunt with Prizes and Surprises!
- Crafting Online Sales: A How-To Happy Hour for Artists

November 2020

- Free Academic Support for Students in Grades 3–8 (weekly)
- RISE (high school program): Managing Money & Saving for Your Future (five sessions)
- Building Career Connection: Networking Tips with Sabrina Woods
- Allston-Brighton Winter Market (Virtual!)

- Learn to Code with Scratch!
- Building Career Connections: The Informational Interview
- Harvard Manage Mentor: Leading People (four sessions)

December 2020

- A Far Cry Presents: Amazonita (offered all month)
- Free Academic Support for Students in Grades 3–8 (weekly)
- Allston-Brighton Winter Market (Virtual!)
- Building Career Connections: Networking in Action
- Harvard Art Museums Tour: “Seeing the Light”
- Monday Job Seekers Connection: The Journey of a Job Seeker Panel Discussion
- Gnome for the Holidays: Fiber Art with Friends
- Harvard Art Museums Tour: The “LOL” Tour

January 2021

- Allston-Brighton Winter Market (Virtual!) (offered all month)
- A Far Cry Presents: Amazonita (offered all month)
- Financial Aid for Students & Families (offered twice in English and Spanish)
- Harvard Art Museums Tour: The Museums, Revisited
- Monday Job Seekers Connection: Visualizing 2021
- Making It as A Maker
- Hand to Heart: Mindfulness Through Clay

- Harvard Art Museums Tour: The Blue Tour
- Business Writing Principles
- Hand to Heart: Mindfulness Through Clay
- Art in Process: Behind the Scenes with Winter Market Artists

February 2021

- Allston-Brighton Winter Market (Virtual!) (offered all month)
- Harvard Manage Mentor: Business Plan Development (four sessions)
- Hand to Heart: Mindfulness Through Clay (two sessions)
- Business Writing: Email for Action
- Harvard Art Museums Tour: Intimacy in Art
- Business Writing: Editing and Proofreading
- Memory, Social Justice, and Mindfulness
- Tune In: An Intuitive Drawing Workshop
- RISE: Resume Writing 101
- RISE: Lyric Writing for Beginners
- Presentation Skills for Non-Native English Speakers
- Reembolso de la Deuda

March 2021

- RISE: Web Development Program (two sessions)
- RISE: Get Up and Get Moving (two sessions)
- RISE: Hire Me!: Interview Preparation (offered twice)
- RISE: Workplace Phone Skills
- RISE: Email in the Workplace
- RISE: Pottery Chill Out

- Make it Pop!: Writing the College Essay (four sessions)
- We Out Here: Exploring Life After High School (four sessions)
- Families and Children: Team Up and Learn Together! (six sessions in March and April)
- Keeping Your Kids Safe on Social Media
- Cracking the College Nut: A Fair Opportunity Workshop (four sessions)
- Crafting Your LinkedIn ‘About’ Summary
- Get that Bread—And Keep It, Too!: Learning How to Manage Your Money (four sessions)
- Informes, puntajes, y tarjetas de crédito
- The Role of Emotional Intelligence in Successful Communication
- Harvard Manage Mentor: Finance Essentials (four sessions in March and April)
- How to Craft and Deliver A Memorable Presentation

April 2021

- RISE: Get Up and Get Moving (two sessions)
- RISE: Web Development Program (two sessions)
- RISE: Pottery Chill Out (two sessions)
- RISE: Time Management While Working from Home
- RISE: First Day on the Job
- Zoom 101: Learn the Basics of Zoom!
- Museum Careers with the Harvard Art Museums
- Presentation Skills

- Small Business & Our Neighborhoods: Reflections on Community, Resilience, & Innovation

- Get that Bread—And Keep It, Too!: Learning How to Manage Your Money (offered all month)
- STEPPING IN
- Decolonizing Your Creative Practice: Perfectionism
- Creating (and Following!) A Budget
- This Space Holds a Story

May 2021

- Decolonizing Your Creative Practice: Perfectionism
- Understanding Money Habits: What Motivates You & What Are Your Goals?
- Using Your Voice: Speak Up and Speak Out at Meetings
- How To Plan Your Online Meeting
- ¡A Bailar! Zumba con Abe—Let’s Dance! Zumba with Abe (offered twice)
- Credit, and Why It’s Important
- Mapping Your Heart: A Zine Making Workshop
- Koru Mindfulness
- Pottery Chill Out

June 2021

- Koru Mindfulness (two sessions)
- Finding Your E-Charisma with Jill Slye
- Pottery Chill Out
- Taking A Leadership Frame of Mind in Online Meetings
- ¡A Bailar! Zumba con Abe—Let’s Dance! Zumba with Abe